

## 2011 – 2012 Peace River Report No. 9

Ground observations along the Peace River located the ice front at km 415 (approximately 19 km downstream of the Highway 2 Bridge at the Town of Peace River) at 09:50 MST on February 6<sup>th</sup>. Mean daily temperatures near the freezing mark have stalled the advance of the ice front since the cold snap in mid-January. Over the past week the ice front has retreated 5 km due to consolidation and erosion by the passing water. Near seasonal temperatures are forecasted for this week, warming over the weekend. We can expect the ice front to continue its advance upstream later this week.

Alberta Environment and Water, and BC Hydro are in contact regarding river ice conditions and operation of the BC Hydro Peace River facilities.

### Observation Details

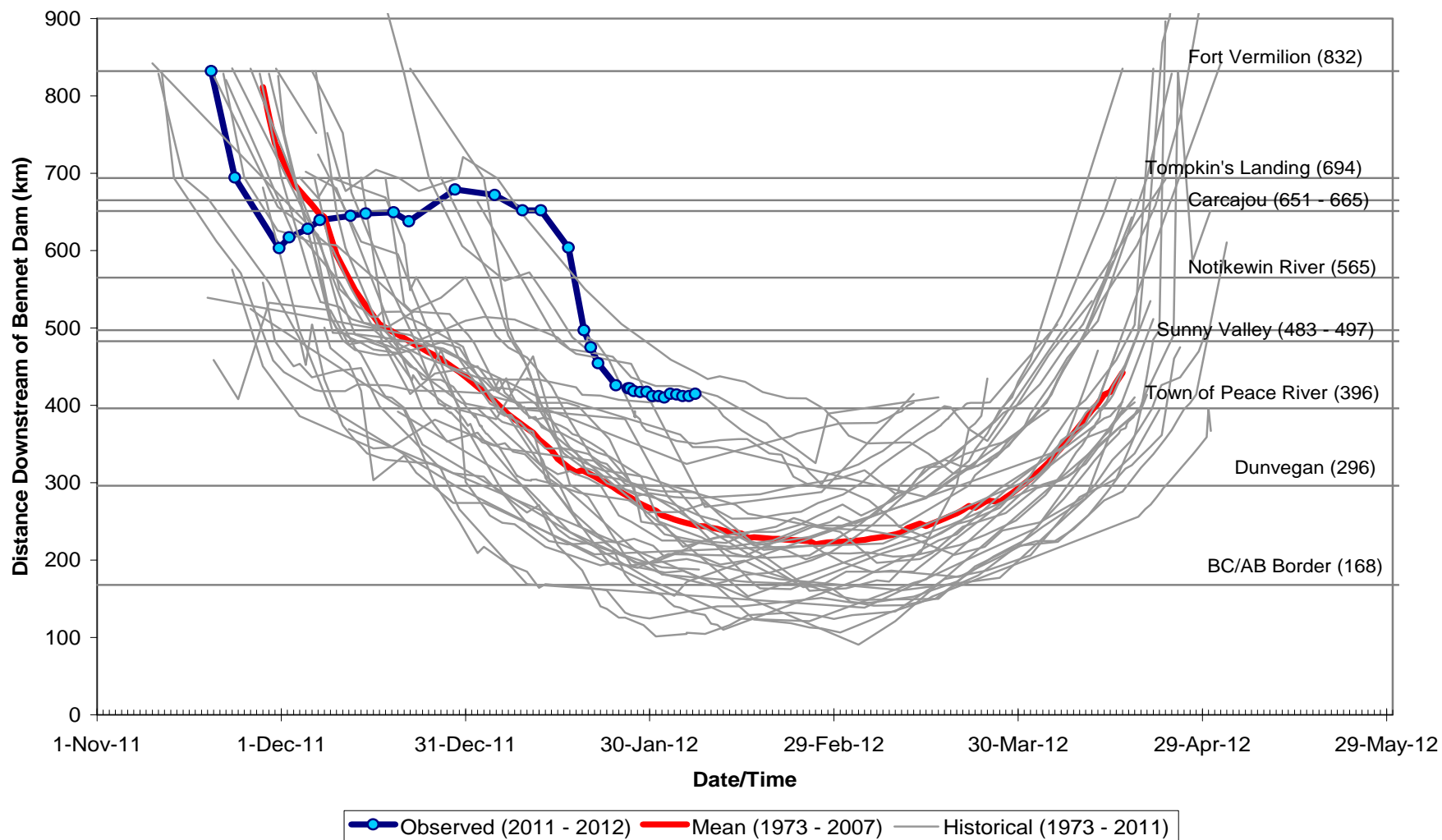
- February 1 – Ground observations
  - km 413 (Hwy. 986 Bridge) – No additional consolidation since January 31<sup>st</sup>
  - km 410 to 411 – Ice cover was stationary at km 411, and ice front is located closer to km 410 at 8:55 MST. Ice cover is juxtaposed and packed loosely.
  - km 396 - Surface ice concentration estimated at 10 to 20%
- February 2 – Ground observations
  - km 416.5 - A consolidation has caused water levels to increase to within 1 m of the top of bank, causing minor flooding in the low-lying areas adjacent to the river and an access road to the Shell Canada Complex facility. Water levels increased throughout the day before dropping late in the day
  - km 415 – Ice front location at 8:55 MST
- February 3 – Ground observations
  - km 414 – Ice front location at 9:30 MST. Ice cover is juxtaposed.
  - km 396 – Surface ice concentration estimated at less than 5%
- February 4 – Ground observations
  - km 412 – Ice front location at 8:50 MST. Ice cover is juxtaposed.
  - km 411 – Surface ice concentration estimated at 20 to 30%
- February 5 – Ground observations
  - km 412 – Ice front location at 9:10 MST.
  - km 411 – Surface ice concentration estimated at 0%
- February 6 – Ground observations
  - km 415 – Ice front location at 9:50 MST.
  - km 414 to 411 – Surface ice concentration is estimated at 60% and composed of large pieces of skim ice less than 1 cm thick
  - km 396 – Surface ice concentration is estimated at less than 5%

## Temperature Forecast

The following table contains Environment Canada's observed and forecasted daily maximum and minimum temperatures through to Sunday, 12 February.

Day	Date	Location		
		High Level	Peace River	Fort St. John
Yesterday	5 February	-1.5 / -19.3	0.6 / -10.6	1.5 / -6.5
Today	6 February	-12	-5	-7
Tuesday	7 February	-7 / -18	-6 / -17	-8 / -12
Wednesday	8 February	-9 / -18	-9 / -17	-8 / -12
Thursday	9 February	-12 / -21	-12 / -17	-7 / -13
Friday	10 February	-9 / -16	-7 / -16	-4 / -12
Saturday	11 February	-8 / -19	-4 / -12	0 / -5
Sunday	12 February	-7 / -16	-1 / -10	-1 / -6
Average Max/Min for 6 February		-12 / -25	-8 / -19	-7 / -16

### Observed Peace River Ice Front Locations 2011-2012



Ground observations will continue this week.