

Alberta Environment  
Peace River Ice Observation Report No. 50 – 2006/2007

Observation: April 19, 2007  
Report: April 19, 2007  
Report by: Willi Granson and Evan Friesenhan

**Observation**

Alberta Environment conducted an aerial observation of the Peace and Smoky rivers.

**Location of the Ice Front:**

Alberta Environment located the Peace River ice front at km 330 on April 19, 2007 at 09:50 MDT.

Alberta Environment has also located a secondary ice front at km 426 at 09:05. There is roughly 4 km of broken ice upstream of this ice front and then an open section of river that extends up to km 417.

Figure 1 shows a graph of the observed **primary** ice front on the Peace River for the 2006/2007 ice season.

**Observation Details:**

Smoky River

- Observation conducted at 09:20 MDT.
- At km 389 of the Peace River, the open lead into the Peace River from the Smoky is now filled in with brash ice.
- The Smoky River has opened an open lead into the Peace River from km 391.5 to 392.5 on the Peace River. This open lead is hugging the right bank of the Peace River.
- The toe of the Smoky River ice jam is slightly downstream of km 0 of the Smoky River.
- The head of the ice jam was observed at km 4. Inflow from upstream into the head is mainly woody debris. The inflow surface coverage is roughly 15 %. Water levels remain elevated throughout the jam and upstream due to snowmelt runoff.
- From the head of the ice jam to km 30, there is dirty, broken ice parked along the banks and gravel bars. Surface coverage in the flow in this reach is roughly 15 % consisting of mainly wood debris and some dark, broken, slushy ice.

Peace River

- Ice front at km 330 at 09:50 MDT with roughly 700 m of brash ice upstream of the front.
- From km 330 to km 385, the ice cover is showing signs of thermal deterioration as it continues to darken and develop numerous small open leads.
- At km 389, the open lead from the Smoky River that extends into the Peace River is now filled with brash ice from the ice jam at the mouth of the Smoky River.

- From km 391.5 to km 392.5, flow from the Smoky River has created an open lead along the right bank of the Peace River.
- Km 394, the Heart River open lead now extends downstream to km 403. This represents a one km lengthening of the lead since yesterday's observation. Also, the left channel around Bewley Island is still ice covered.
- From km 403 to km 417, the ice cover is continuing to show signs of thermal deterioration.
- Km 417 to km 422.5, No noticeable change when compared to yesterday's observation. The majority of this reach is open.
- Km 422.5 to km 426.25, brash ice.
- Second ice front observed at km 426 at 09:05 MDT. This location has not changed from yesterday's observation.
- Km 426.75 to 437.5, A long narrow open lead has developed along the centre line of the river.
- From km 427 to km 452 the ice cover is showing signs of thermal deterioration.

**Temperature Forecast:**

The following are Environment Canada's forecast daily maximum and minimum temperatures through Monday, April 23, 2007.

Location	Today	Friday	Saturday	Sunday	Monday
Ft. St. John	High 5	4/0	8/-3	12/-3	14/0
Peace River	High 3	9/0	5/-2	8/-4	10/0
High Level	High 12	10/0	12/1	13/0	11/-2

The next observation report will be circulated after the next observation or if ice conditions change drastically.

### Observed Peace River Ice Front Locations 2006/07

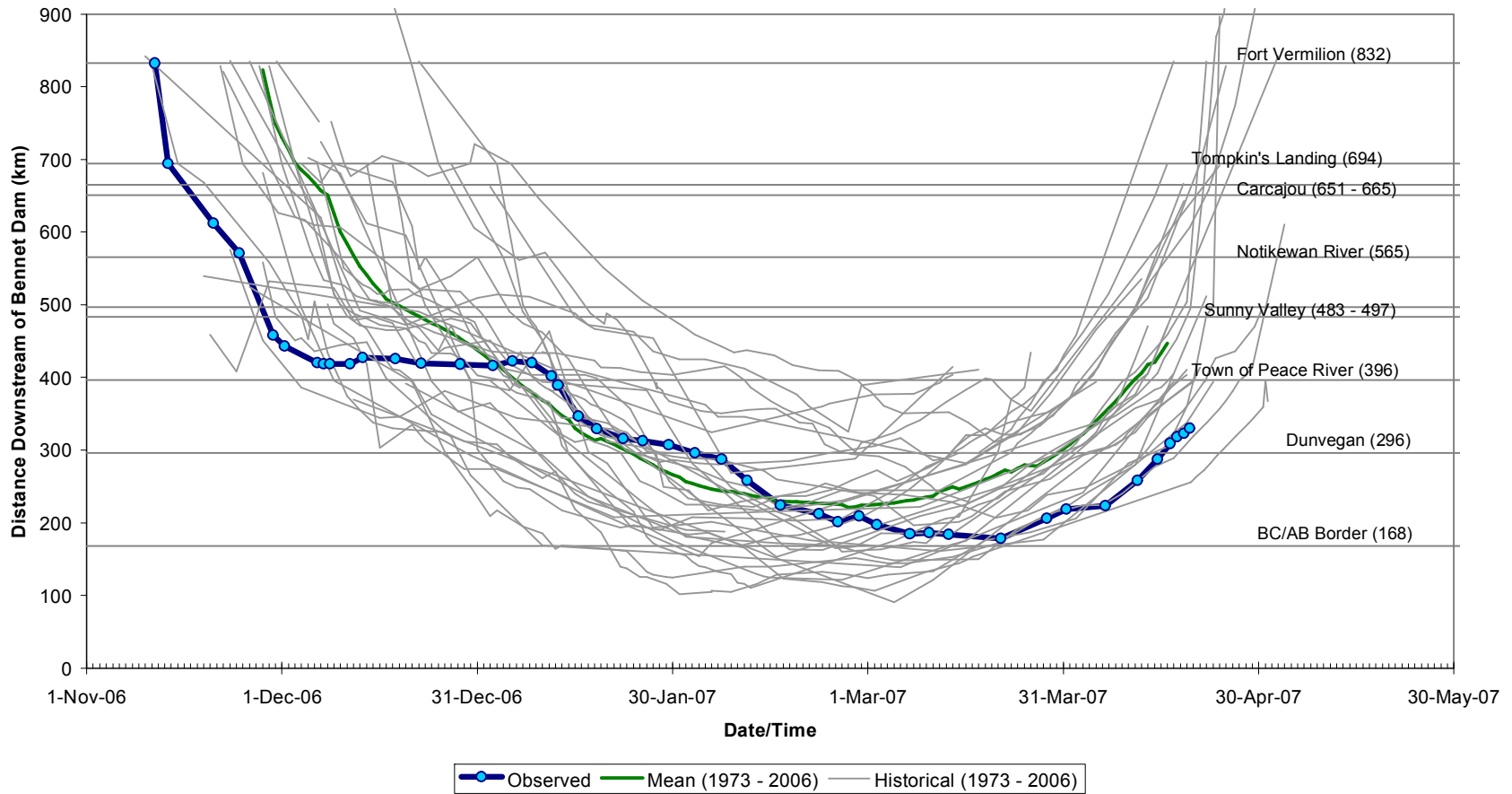


Figure 1: Observed Peace River Ice Front Locations for the 2006/2007 Ice Season.