

Alberta Environment  
Peace River Ice Observation Report No. 46 – 2006/2007

Observation: April 16, 2007  
Report: April 16, 2007  
Report by: Willi Granson and Evan Friesenhan

Responsibility for ice observation flights has been returned to Alberta Environment from BC Hydro as the ice front on the Peace River has now receded past Dunvegan.

**Observation**

Alberta Environment conducted an aerial observation of the Peace and Smoky rivers.

**Location of the Ice Front:**

Alberta Environment located the Peace River ice front at km 308.9 on April 16, 2007 at 11:10 MDT.

Figure 1 shows a graph of the observed ice fronts on the Peace River for the 2006/2007 ice season.

**Observation Details:**

**Smoky River**

- From km 0 to km 3 the ice cover was intact.
- At km 3 was the toe of an ice jam at 10:10 MDT.
- From km 3 to km 9, the ice jam (brash ice) was not moving.
- Km 9 to 9.5, reach was open.
- Km 9.5 to 12, ice jam (brash ice) was not moving.
- Km 12 to 18, surface coverage of 75% moving downstream.
- Km 18 to 25, moving brash ice. Surface coverage was 85%. Large amounts of brash ice were observed on the banks and gravel bars.
- Km 25 to 48, 90% surface coverage moving downstream.
- Km 37, the Hanging Dam has been removed by the ice run.
- Km 50, 60% surface coverage.
- Km 65, 30% surface coverage.
- Km 70 to 81, 10% surface coverage.
- Km 81 to 81.5, ice jam.
- Km 84 to 87, ice jam.
- Km 87 to km 140, surface ice coverage of brash ice is roughly 40 % tapering off to less than 5%.
- Significant amounts of brash ice were observed along the banks and gravel bars throughout the entire reach.

**Smoky River @ 11:25 MDT**

- The toe of the ice jam had started to move and was now located at km 2. At this time it was continuing to move downstream towards the mouth of the Smoky River.

Smoky River @ 11:50 MDT

- The toe of the ice jam had reached km 1.

Smoky River @ 12:30 MDT

- The toe of the ice jam had stopped pushing downstream and had come to a rest at km 1.

Peace River

- Km 294, the Peace River is open. The Hine and Dunvegan creeks are not running.
- Km 300, 40 % of the channel was open.
- Km 305, 60 % open.
- Km 306, 30 % open.
- Km 308.9, ice front at 11:10 MDT. Roughly 1 km of brash ice was upstream of the ice front.
- Km 309.25 to km 311, an open lead has developed on the left side of the channel.
- Km 312 to 314, open lead along centre of the channel.
- Km 320 to 394.75, no change compared to the April 14, observation.
- Km 394.75 to km 395.5, an open lead has been created by the Heart River.
- Km 394 to 400, Thermal deterioration has continued to progress.
- Km 400 to 400.25, an open lead has developed in the right channel downstream of the ATCO ice bridge.
- Km 401 to km 427, no change when compared to the April 14 observation.

**Temperature Forecast:**

The following are Environment Canada's forecast daily maximum and minimum temperatures through Friday, April 20, 2007.

Location	Today	Tuesday	Wednesday	Thursday	Friday
Ft. St. John	High 9	9/-2	5/-3	2/-1	5/-3
Peace River	High 10	6/-2	8/0	8/-3	5/-1
High Level	High 12	13/-4	14/-5	6/-5	8/0

The next observation report will be circulated after the next observation or if ice conditions change drastically.

Observed Peace River Ice Front Locations 2006/07

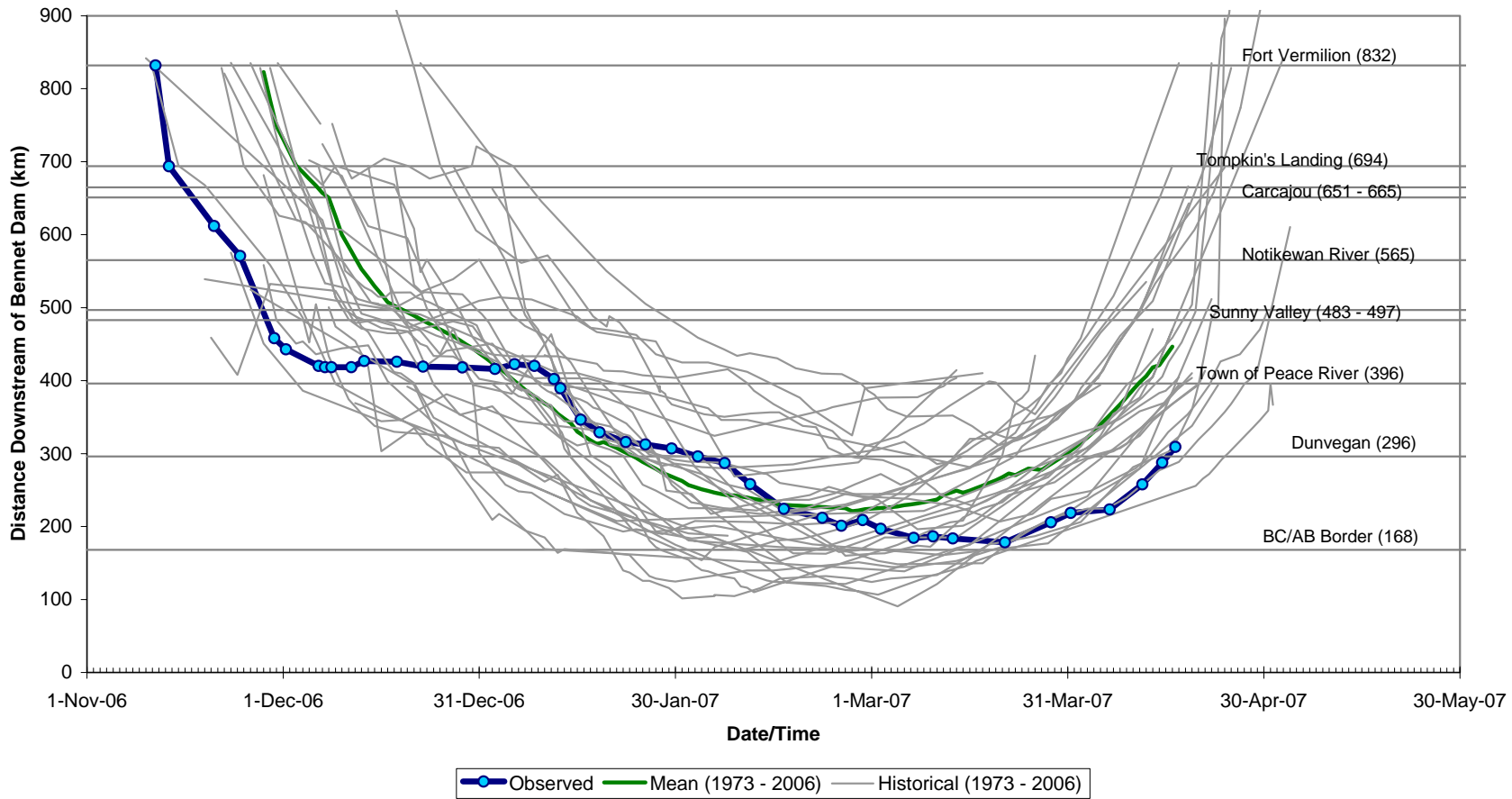


Figure 1: Observed Peace River Ice Front Locations for the 2006/2007 Ice Season.