

Alberta Environment
Peace River Ice Observation Report No. 41 – 2006/2007

Observation: April 12, 2007

Report: April 12, 2007

Report by: Willi Granson and Evan Friesenhan

Responsibility for ice observation flights detailing the position of the Peace River ice front currently resides with BC Hydro. However, with the significant snow packs in the Peace and Smoky river basins and above zero temperatures, Alberta Environment will be conducting break-up observations in addition to the observations made by BC Hydro. The numbering of reports will be unaffected.

Observation

Alberta Environment conducted an aerial observation of the Smoky, Little Smoky, and Heart rivers.

Location of the Ice Front:

The ice front is still upstream of Dunvegan. The most recent observation flight performed by BC Hydro located the Peace River ice front at km 257.8 on April 11, 2006 at 10:20 MDT.

Figure 1 shows a graph of the observed ice fronts on the Peace River for the 2006/2007 ice season.

Observation Details:

Smoky River

- Agricultural land adjacent to the Smoky River is still snow covered though signs of melting have started to appear.
- From the mouth of the Smoky River to km 95, the majority of the snow on the ice cover has melted, numerous short open leads have developed, and water has begun to run on the surface of the ice cover in a number of areas.
- The tributaries to the Smoky River have not yet begun to run with water.

Little Smoky River

- Water levels on the Little Smoky River are beginning to rise.
- The ice cover has darkened, open leads have developed and water is running on top of the ice cover in numerous locations.
- The tributaries entering from the south are running but have not yet peaked. Tributaries from the north are still not running.

Heart River

- From six km upstream of Highway #2 to the TPR the ice cover has darkened and water is running on the surface in most locations.

Temperature Forecast:

The following are Environment Canada's forecast daily maximum and minimum temperatures through Monday, April 16, 2007.

Location	Today	Friday	Saturday	Sunday	Monday
Ft. St. John	High 9	9/0	6/1	8/-4	12/-3
Peace River	High 9	7/-3	6/0	8/-6	10/-3
High Level	High 11	11/-7	8/-3	11/0	8/-5

The next observation report will be circulated after the next observation or if ice conditions change drastically.

Observed Peace River Ice Front Locations 2006/07

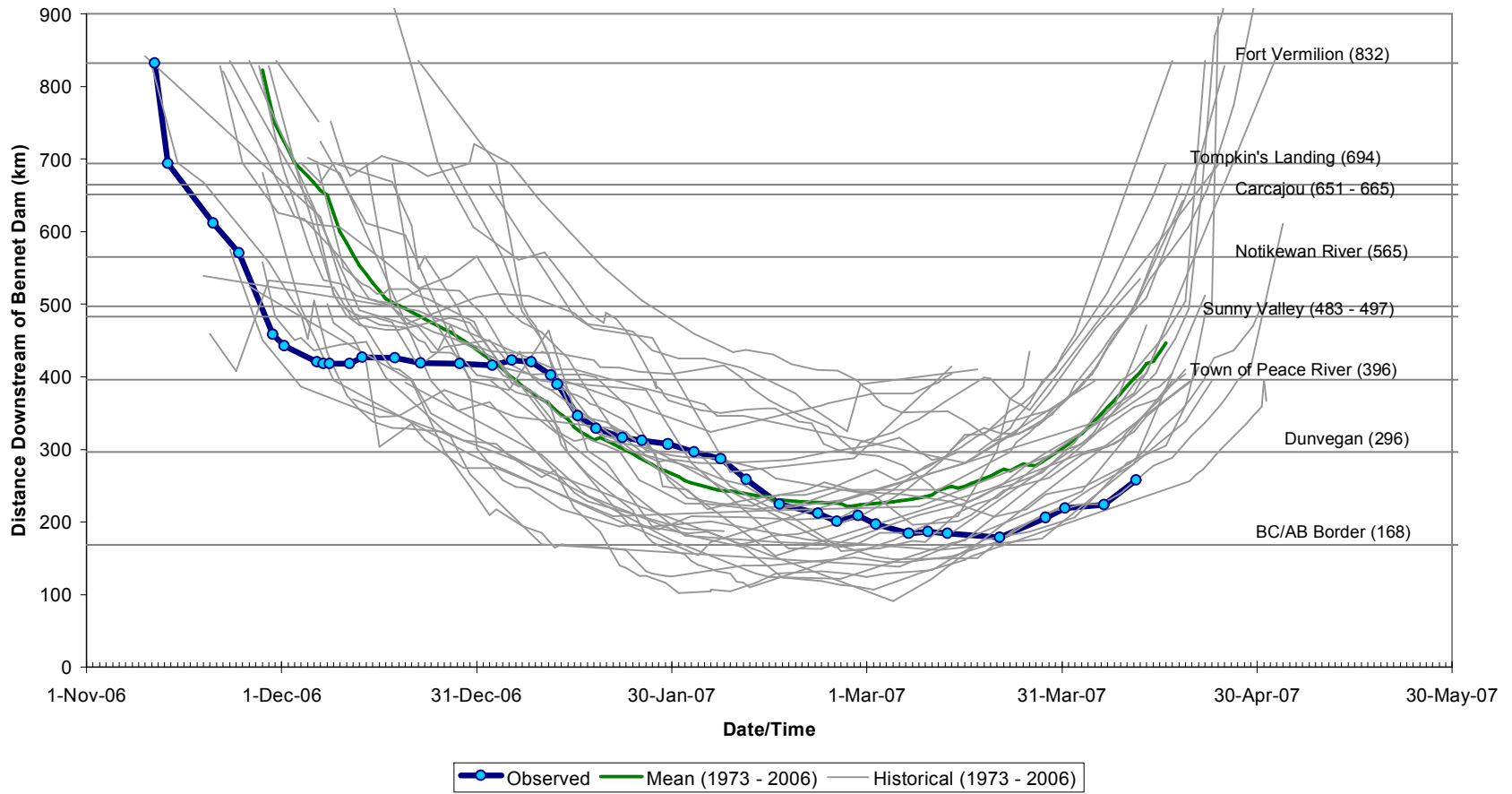


Figure 1: Observed Peace River Ice Front Locations for the 2006/2007 Ice Season.