

Alberta Environment  
Peace River Ice Observation Report No. 39 – 2006/2007

Observation: April 10, 2007  
Report: April 10, 2007  
Report by: Willi Granson and Evan Friesenhan

Responsibility for ice observation flights detailing the position of the Peace River ice front currently resides with BC Hydro. However, with the significant snow packs in the Peace and Smoky river basins and above zero temperatures, Alberta Environment will be conducting break-up observations in addition to the observations made by BC Hydro. The numbering of reports will be unaffected.

### **Observation**

Alberta Environment conducted an aerial observation of the Peace (km 427 to Dunvegan, km 270), Smoky, Little Smoky, and Heart rivers.

### **Location of the Ice Front:**

The ice front is still upstream of Dunvegan. The most recent observation flight performed by BC Hydro located the Peace River ice front at km 223.5 on April 6, 2006 at 10:30 MDT.

Figure 1 shows a graph of the observed ice fronts on the Peace River for the 2006/2007 ice season.

### **Observation Details:**

#### Peace River

- The agricultural lands north and northwest of the Peace River between the Town of Peace River (TPR) and Dunvegan are predominantly snow covered with very little evidence of water ponding in the fields.
- The ice covers on the major tributaries to the Peace River are still snow covered.
- km 295 – 315: ice cover is starting to show signs of thermal deterioration. Most of the snow on the ice cover in this reach has melted. There are three open leads in this reach that have been present throughout the winter. They are located between: km 303.5 to 305, km 603 to 307, and 312 to 314.
- km 315 to 330: due to the steep valley walls and the valley orientation this reach has been shaded from the sun and therefore is still mostly snow covered. There is one open lead in this reach between km 315.5 and 316.25, just downstream of the mouth of the Burnt River. This open lead has been open all winter.
- km 330 to 427: the ice cover is beginning to show signs of melt as it has darkened and most of the snow cover has melted. Open leads have developed at the following locations: km 334 to 335 (right side of island), km 364.5 to 366, km 374 to 374.5, km 414.25 to 417 (along the left bank), km 416.5 to 426.5 (running down the centre of the main channel). Also from km 351 to 351.5, water has begun to pond on the ice cover on the right side of the channel.

#### Smoky River

- Agricultural lands adjacent to the Smoky River valley are still snow covered and do not exhibit signs of ponding melt waters. Tributaries are not open except for reaches that are within the steep Smoky River valley walls.
- The ice cover of the Smoky River from the mouth to km 83, just upstream of the mouth of the Little Smoky River, is intact. The ice cover has begun to show signs of thermal deterioration with patches of dark ice and the occasional short open lead. The hanging dam at km 37.5 is still in place.

**Little Smoky River**

- From the mouth of the Little Smoky to Secondary Highway #744: the ice cover is dark with the occasional open lead. The southern tributaries are starting to open.
- Secondary Highway # 744 to Clouston Creek: Water observed to be running on the ice cover.
- Clouston Creek to Highway # 49 bridge: ice cover is intact. An open lead just downstream of the bridge has started to form.
- The agricultural land near Guy has begun to show signs of water ponding in the low areas.

**Heart River**

- From six km upstream of Highway #2 to the TPR the ice cover is mainly snow covered with an occasional short reach that has water running on the ice cover.

**Temperature Forecast:**

The following are Environment Canada's forecast daily maximum and minimum temperatures through Sunday, April 15, 2007.

Location	Today	Thursday	Friday	Saturday	Sunday
Ft. St. John	High 8	7/-2	8/-1	9/-1	8/-4
Peace River	High 5	5/-5	7/-4	5/-3	6/-5
High Level	High 9	11/-7	11/-8	10/-3	13/-4

The next observation report will be circulated after the next observation or if ice conditions change drastically.

Observed Peace River Ice Front Locations 2006/07

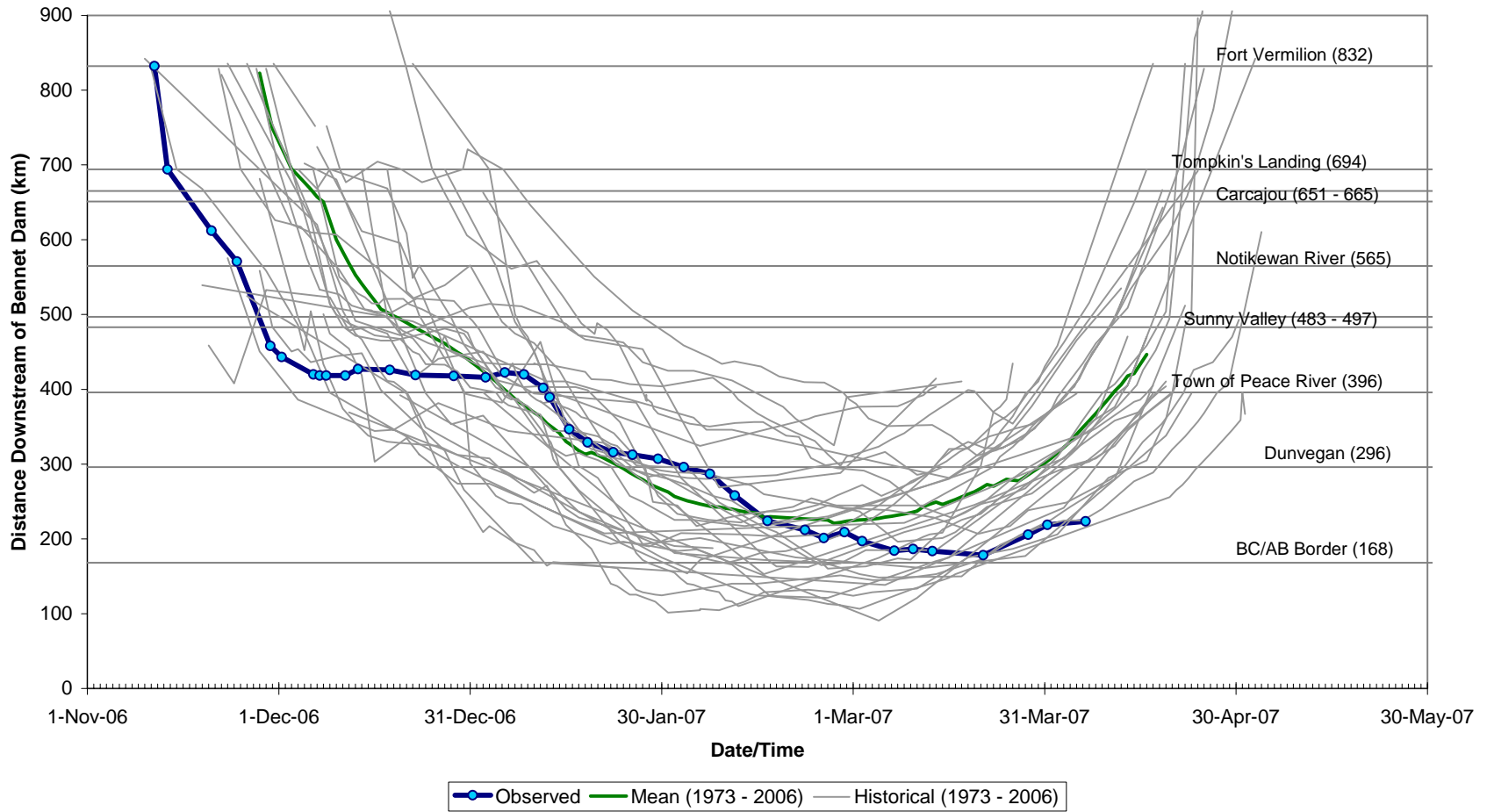


Figure 1: Observed Peace River Ice Front Locations for the 2006/2007 Ice Season.