

Alberta Environment
Peace River Ice Observation Report No. 22 – 2006/2007

Observation: January 25, 2007
Report and Forecast: January 25, 2007
Report by: Willi Granson and Evan Friesenhan

Observation

Alberta Environment conducted an aerial observation of the Peace River from the Town of Peace River (396) to Dunvegan (km 295).

Location of the Ice Front:

The ice front was observed at **km 312 at 10:00 MST**. This places the ice cover approximately 17 km downstream of the Highway 2 Bridge at Dunvegan. Compared to the previous observation the ice front has advanced roughly 3.5 km since January 22, 2007.

As part of normal winter operations BC Hydro will keep flow releases relatively constant as freeze-up at the town progresses.

Observation Details:

- Dunvegan to km 312.5 – Surface ice coverage is less than 5%. There is currently no ice being generated upstream;
- km 312.5 to km 312.75 – Juxtaposed ice cover composed of broken border ice;
- km 312.75 to 316 – Juxtaposed, slushy ice pans make up the ice cover;
- km 316 to 320 – Semi-consolidated ice cover;
- km 320 to 322.5 – Juxtaposed;
- km 322.5 to 327 – Consolidated ice cover, though there is an open lead from km 325.5 to 326.25 in the left half of the channel;
- km 327 to 380 – No observable change in comparison to previous flight.

Figure 1 shows a graph of the observed ice fronts on the Peace River for the 2006/2007 ice season.

Temperature Forecast:

The following are Environment Canada's forecast daily maximum and minimum temperatures through Monday, January 29, 2007.

Location	Today	Friday	Saturday	Sunday	Monday
Ft. St. John	1/-12	-8/-12	-3/-10	-5/-8	4/-9
Peace River	7/3	-6/-12	-8/-17	-7/-10	1/-14
High Level	0/-18	-14/-18	-7/-23	-8/-16	-2/-19

The next observation report will be circulated after the next observation or if ice conditions change drastically.

Observed Peace River Ice Front Locations 2006/07

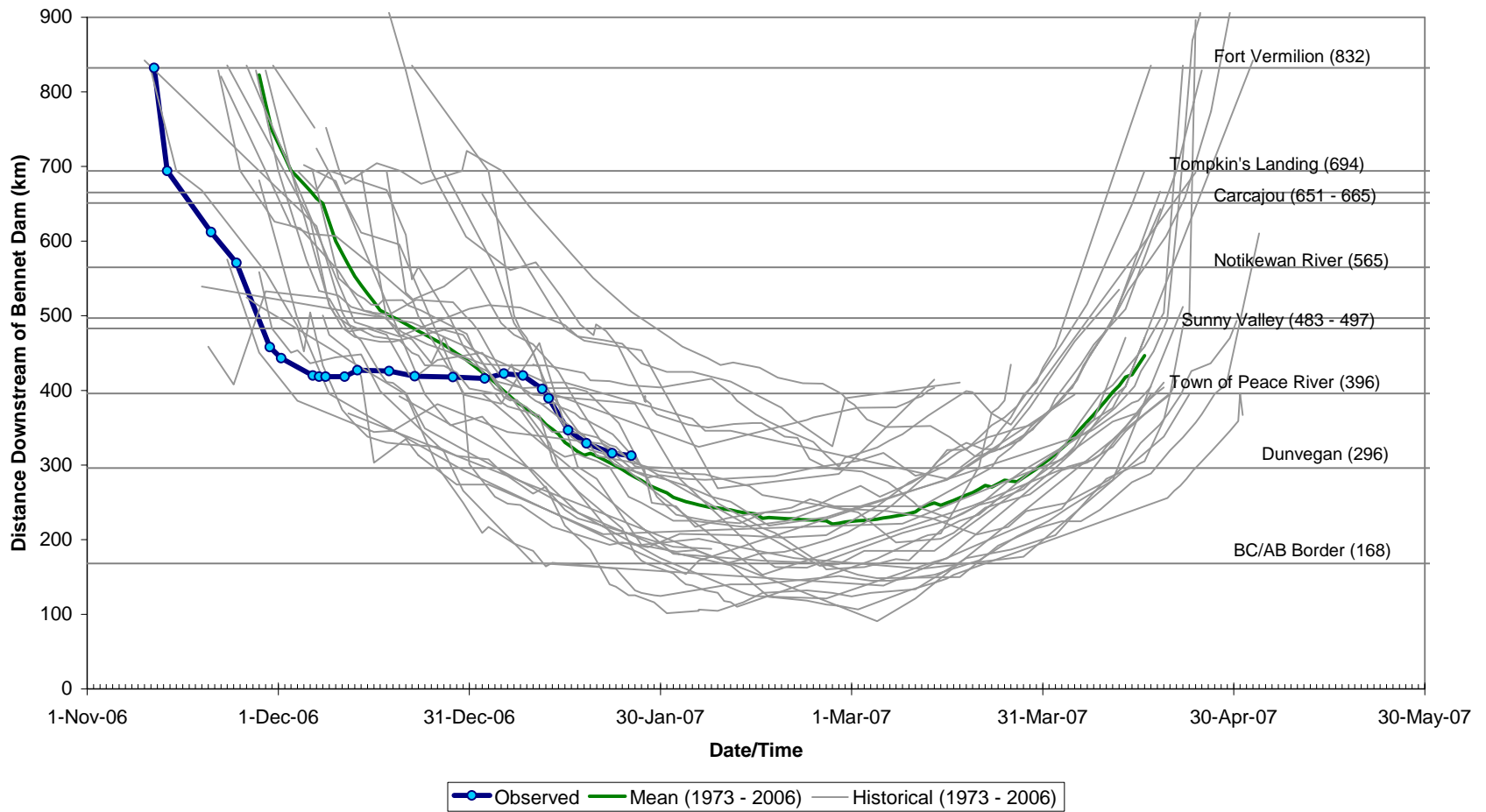


Figure 1: Observed Peace River Ice Front Locations for the 2006/2007 Ice Season.