

Alberta Environment
Peace River Ice Observation Report No. 20 – 2006/2007

Observation: January 18, 2007
Report and Forecast: January 18, 2007
Report by: Willi Granson and Evan Friesenhan

Observation

Alberta Environment conducted an aerial observation of the Peace River from the Town of Peace River (396) to Dunvegan (km 295).

Location of the Ice Front:

The ice front was observed at **km 329 at 9:15 MST**. This places the ice cover approximately 34 km downstream of the Highway 2 Bridge at Dunvegan. Compared to the previous observation the ice front has advanced roughly 17.5 km since January 15, 2007.

As part of normal winter operations BC Hydro will keep flow releases relatively constant as freeze-up at the town progresses.

Observation Details:

- Dunvegan to km 310 – Surface ice coverage from 15% increasing to 20%. km 307 – upstream end of the backwater effect caused by the approaching ice cover;
- km 311 to 326 – Heavy fog prevented detailed observation, however at km 323 the surface ice coverage was observed to be 30%;
- km 326 to 329 – Surface ice coverage of 50%;
- Ice front to km 337 – The ice cover was juxtaposed;
- km 337.5 to 338 – Consolidated ice cover;
- km 338 to 349 – Juxtaposed and semi-consolidated reaches. Water levels have increased since the previous observation with flooding on the fringe lines;
- km 349.5 to 350.5 – Large open water section due to tear in the ice cover;
- km 351 to 352 – Ice cover is consolidated downstream of the tear;
- km 353 to 389 – No change observed when compared to previous observation.

Figure 1 shows a graph of the observed ice fronts on the Peace River for the 2006/2007 ice season.

Temperature Forecast:

The following are Environment Canada's forecast daily maximum and minimum temperatures through Monday, January 22, 2007.

Location	Today	Friday	Saturday	Sunday	Monday
Ft. St. John	-4/-6	0/-	-5/-11	-5/-10	2/-8
Peace River	-9/-17	0/-11	-7/-13	-5/-12	0/-12
High Level	-14/-18	-14/-23	-11/-20	-11/-23	-8/-16

The next observation report will be circulated after the next observation or if ice conditions change drastically.

Observed Peace River Ice Front Locations 2006/07

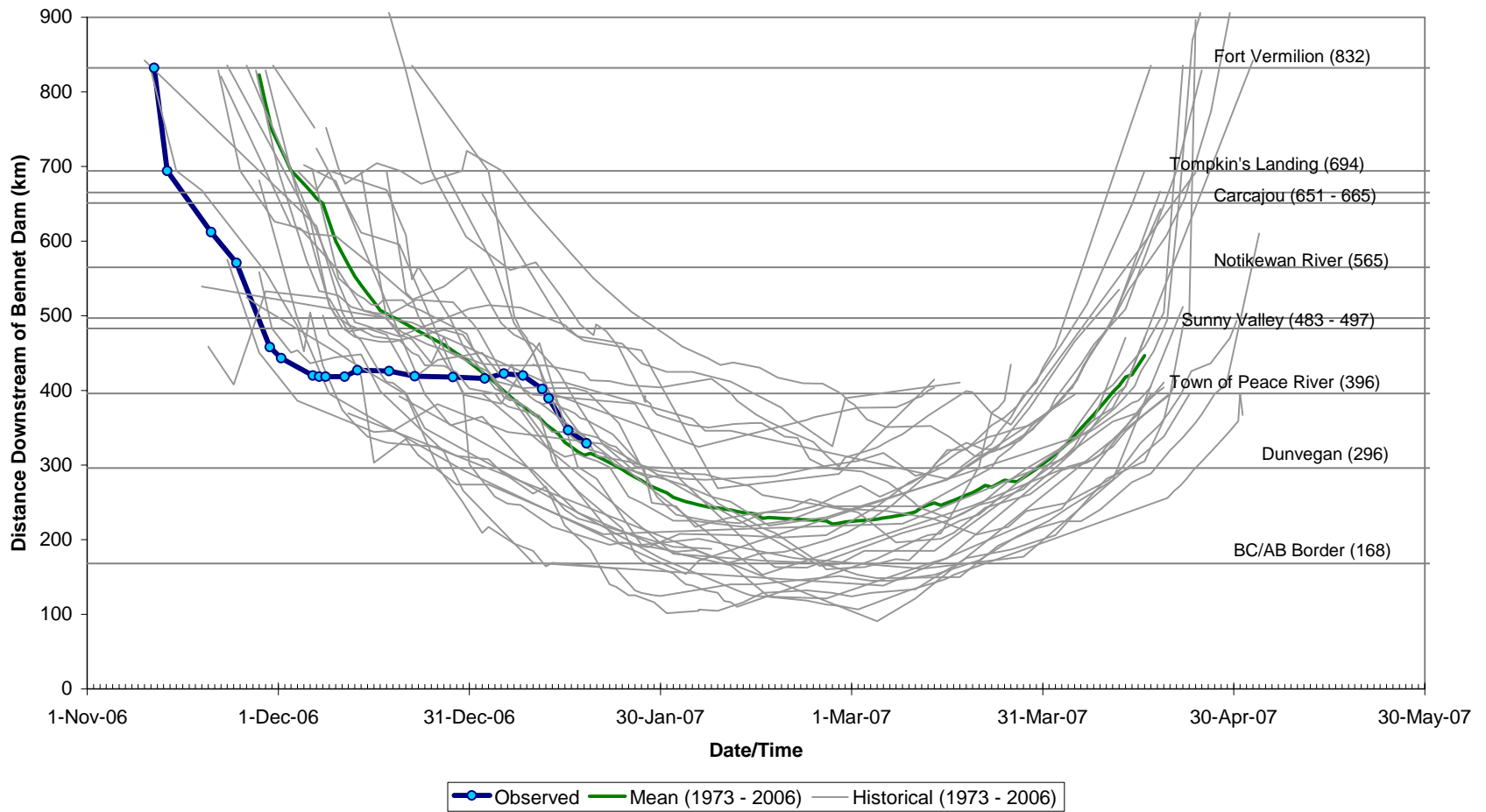


Figure 1: Observed Peace River Ice Front Locations for the 2006/2007 Ice Season.