

Alberta Environment  
Peace River Ice Observation Report No. 15 – 2006/2007

Observation: January 2, 2007  
Report and Forecast: January 2, 2007  
Report by: Willi Granson and Evan Friesenhan

**Observation**

Alberta Environment conducted a ground observation of the Peace River from the Town of Peace River to approximately 25 km downstream of the Town of Peace River.

**Location of the Ice Front:**

The ice front was observed at **km 416 at 09:40 MST on January 2, 2007**. This places the ice cover approximately 20 km downstream of the Highway 2 Bridge at the Town of Peace River. This represents a 2 km advance of the ice cover since December 28, 2006.

**Observation Details:**

- Less than 5% surface ice coverage at km 396 (Highway 2 Bridge at the Town of Peace River).
- 10% surface coverage at km 413.5 (Highway 986 Bridge)

Figure 1 shows a graph of the observed ice fronts on the Peace River for the 2006/2007 ice season.

**Temperature Forecast:**

The following are Environment Canada's forecast daily maximum and minimum temperatures through Saturday, January 6, 2007.

Location	Today	Wednesday	Thursday	Friday	Saturday
Ft. St. John	5/2	0/-1	1/-2	-5/-14	-7/-8
Peace River	3/0	Temperature Falling	-1/-7	-5/-19	-8/-10
High Level	0/-5	Temperature Falling	-10/-15	13/-24	-13/-15

The next observation report will be circulated after the next observation or if ice conditions change drastically.

Observed Peace River Ice Front Locations 2006/07

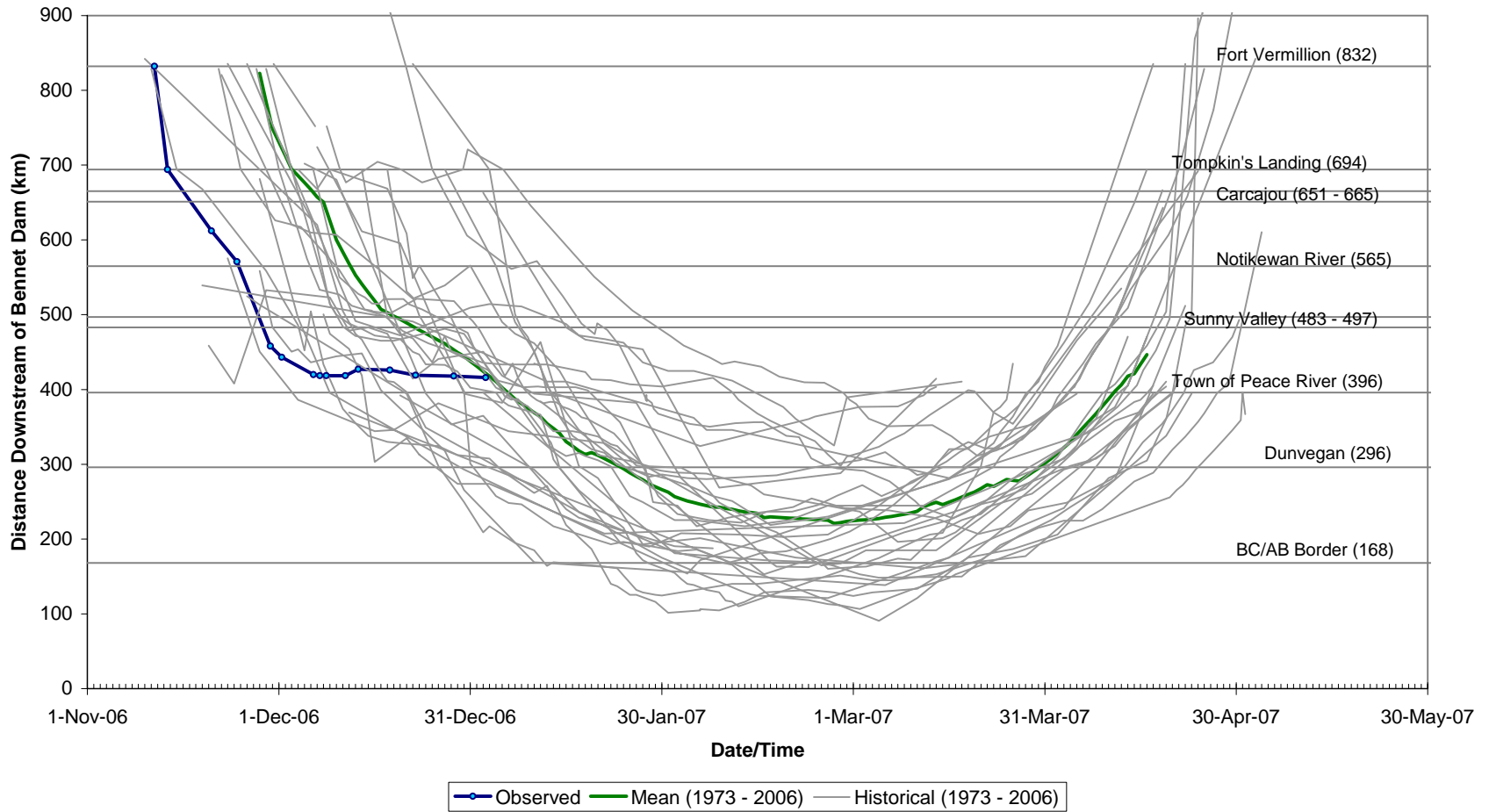


Figure 1: Observed Peace River Ice Front Locations for the 2006/2007 Ice Season.