

Alberta Environment  
Peace River Ice Observation Report No. 14 – 2006/2007

Observation: December 28, 2006  
Report and Forecast: December 28, 2006  
Report by: Kevin Osowetski and Evan Friesenhan

**Observation**

Alberta Environment conducted an aerial observation of the Peace River from the Town of Peace River to approximately 45 km downstream of the Town of Peace River.

**Location of the Ice Front:**

The ice front was observed at **km 418 at 10:00 MST on December 28, 2006.** This places the ice cover approximately 22 km downstream of the Highway 2 Bridge at the Town of Peace River. This represents no significant change in the position of the ice front since December 22, 2006. Based on this observation and the forecast temperatures for the Peace River region it is expected that the ice front will slowly advance upstream.

**Flight Details:**

- 20% surface coverage of ice pans at km 413
- 10% surface coverage of ice pans at km 396 (Highway 2 Bridge at the Town of Peace River.

Figure 1 shows a graph of the observed ice fronts on the Peace River for the 2006/2007 ice season.

**Temperature Forecast:**

The following are Environment Canada's forecast daily maximum and minimum temperatures through Monday, January 1, 2007.

Location	Today	Friday	Saturday	Sunday	Monday
Ft. St. John	-5/-12	-5/-11	0/-9	-2/-12	1/-3
Peace River	-9/-14	-3/-14	-5/-11	-4/-11	-6/-10
High Level	-19/-26	-8/-	-7/-10	-10/-15	-7/-14

The next observation report will be circulated after the next flight or if ice conditions change.

Observed Peace River Ice Front Locations 2006/07

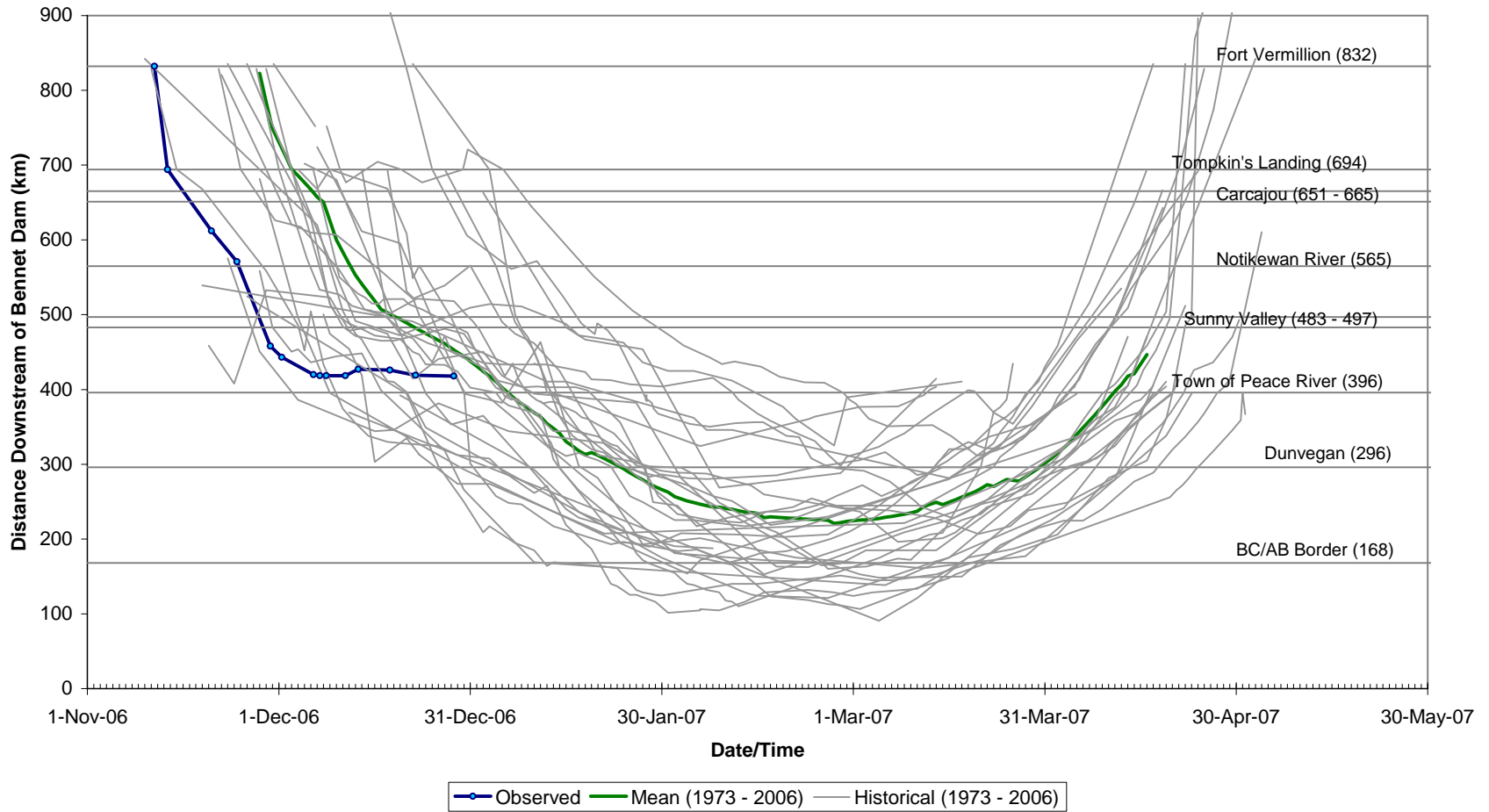


Figure 1: Observed Peace River Ice Front Locations for the 2006/2007 Ice Season.